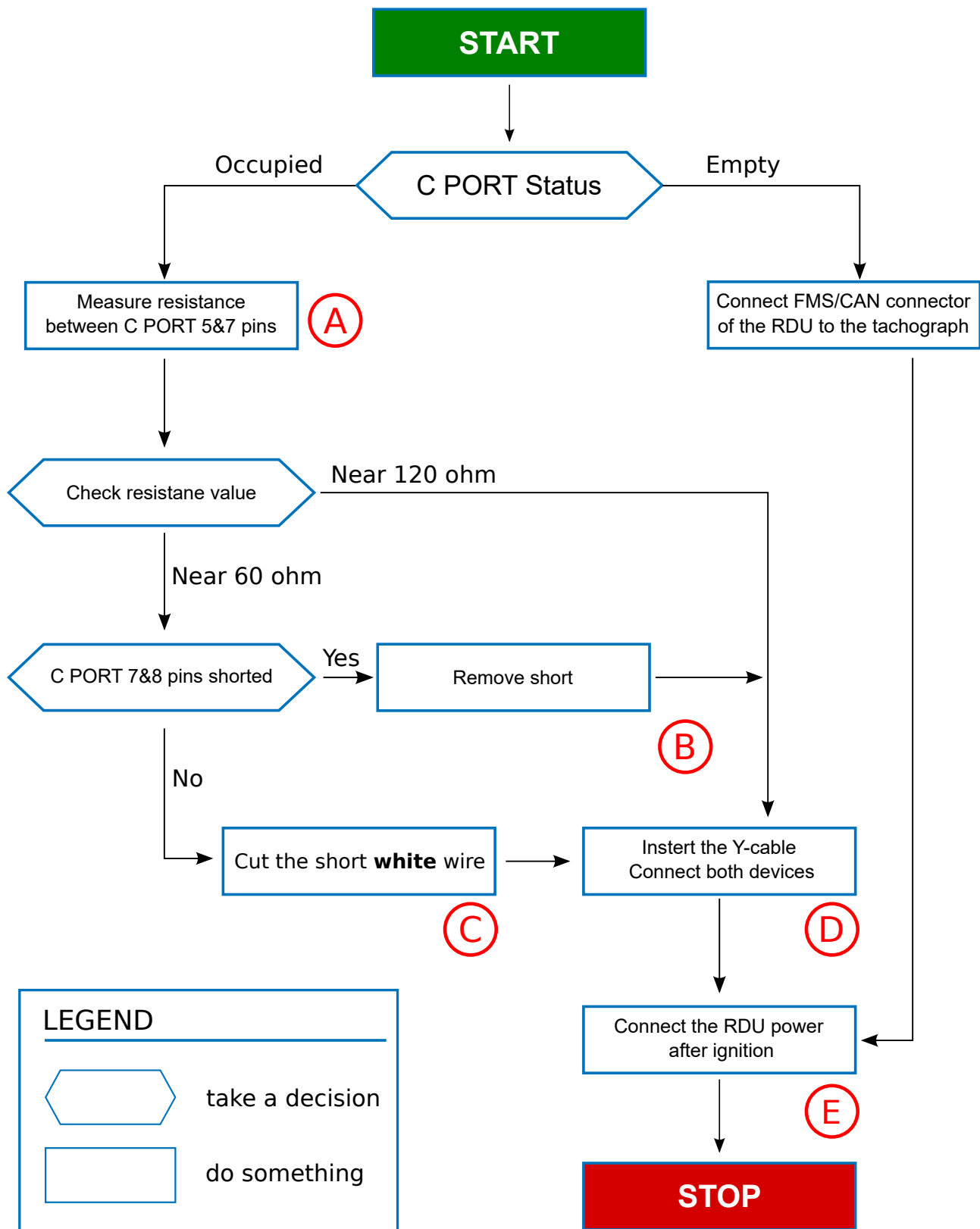


RDU 4G Connection scenarios



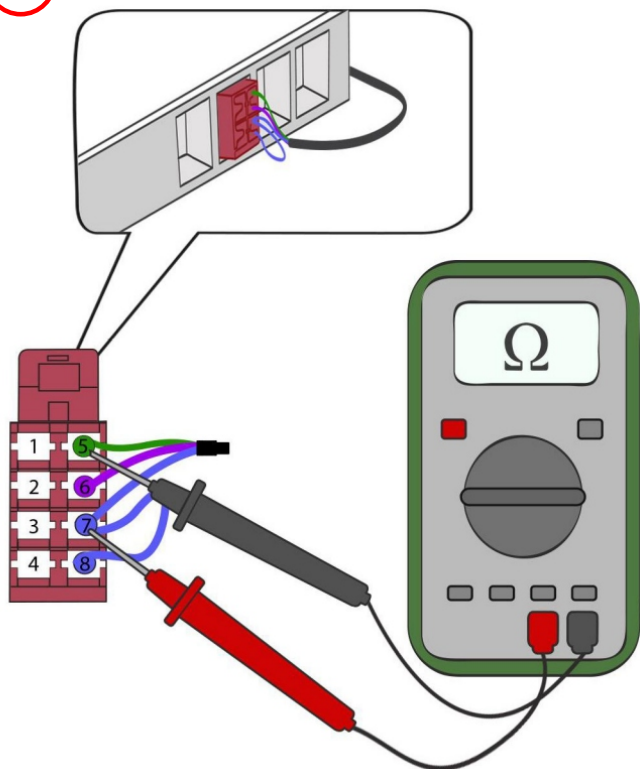
Note: If the tachograph is a **Stoneridge SE5000-8 REV:02** and has an aftermarket DSRC module, then move the DSRC module from the CAN C1 line to the CAN C2 line and reconfigure the tachograph settings.



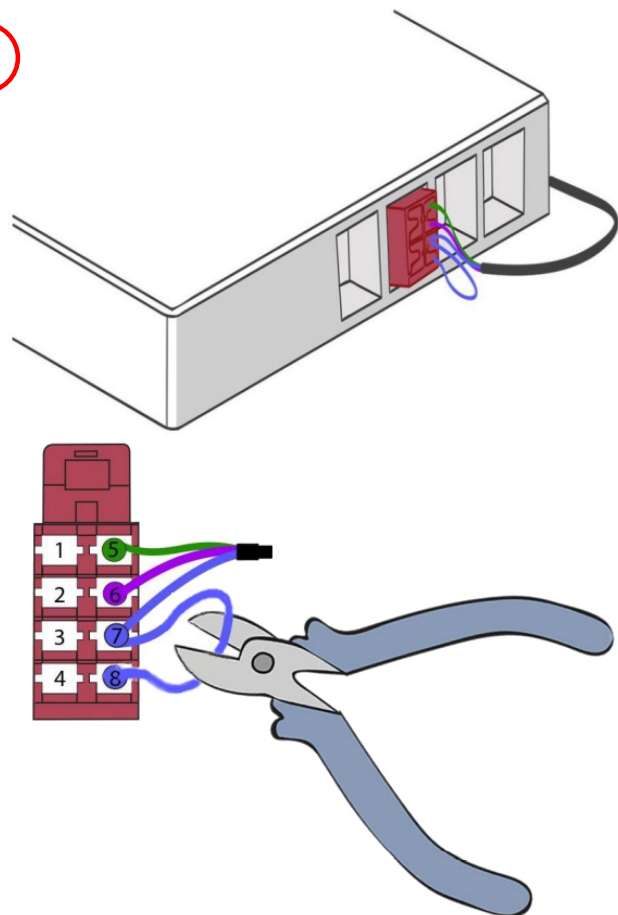
After the **RDU** is installed measure the **CAN** resistance between the CAN High(**C5**) and CAN Low(**C7**) pins. It should be around **60 ohm**.

RDU 4G Connection scenarios

A



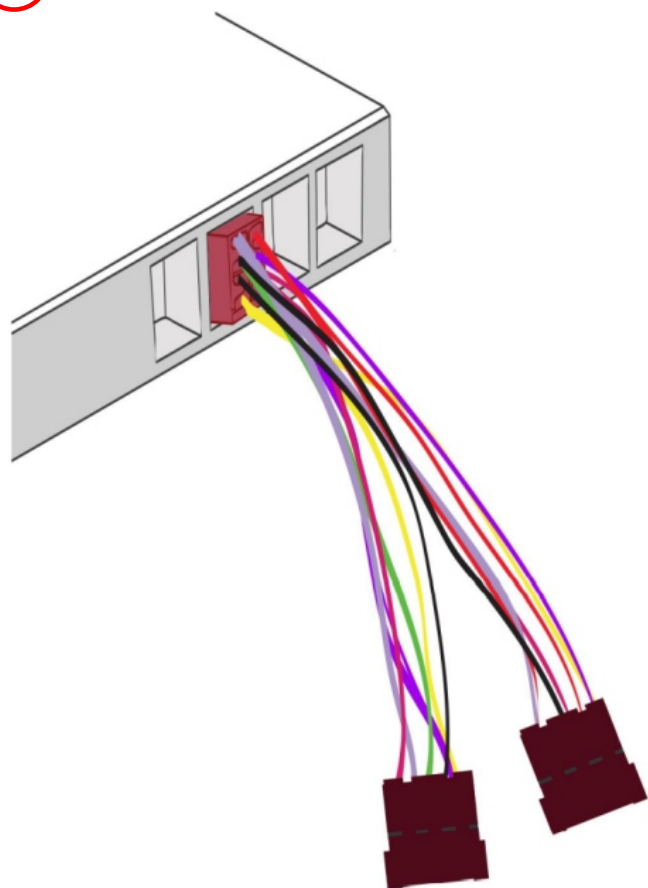
B



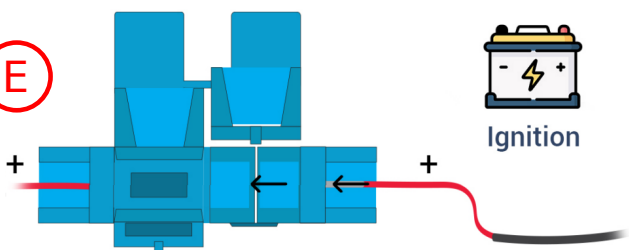
C



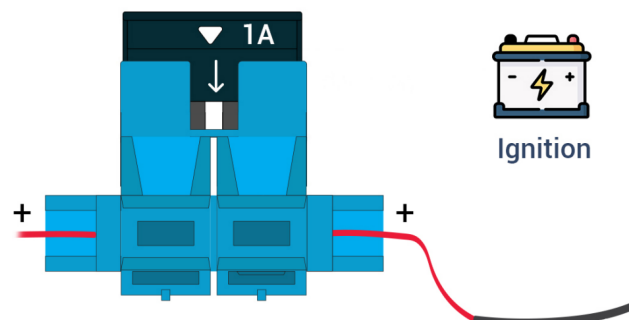
D



E



Open fuse holder and insert ignition wire.



Close the fuse holder and insert the 1A fuse.